

6C-19

FILED
GREENVILLE, S.C.
MAY 19 4 38 PM '77
DONNIE S. TANKERSLEY
R.M.C.

MAY 19 1977

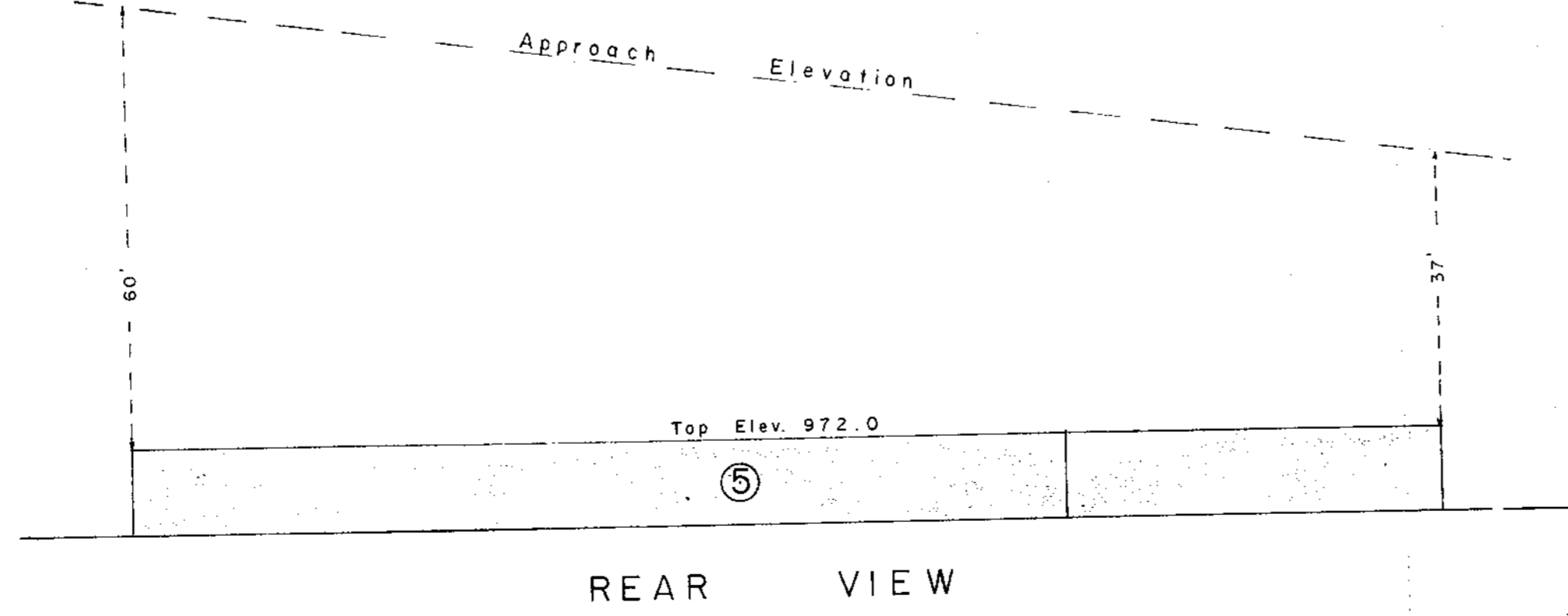
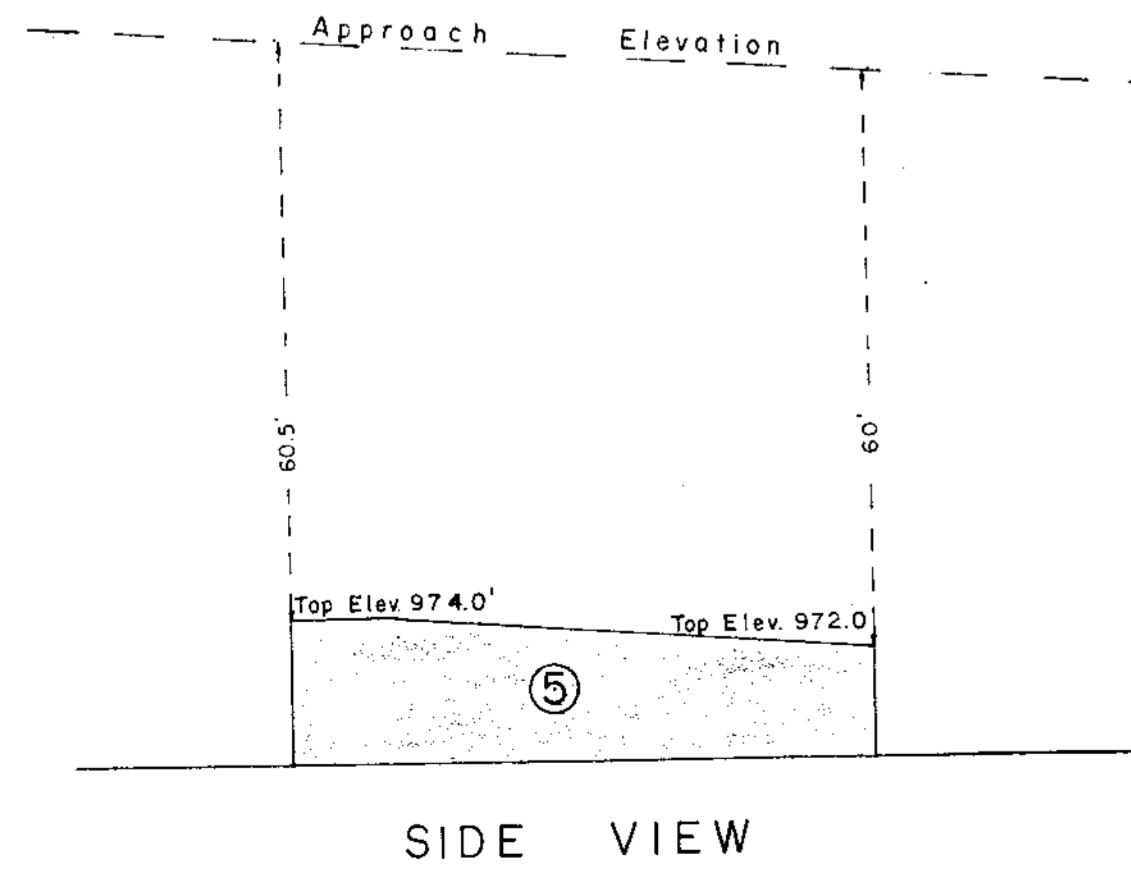
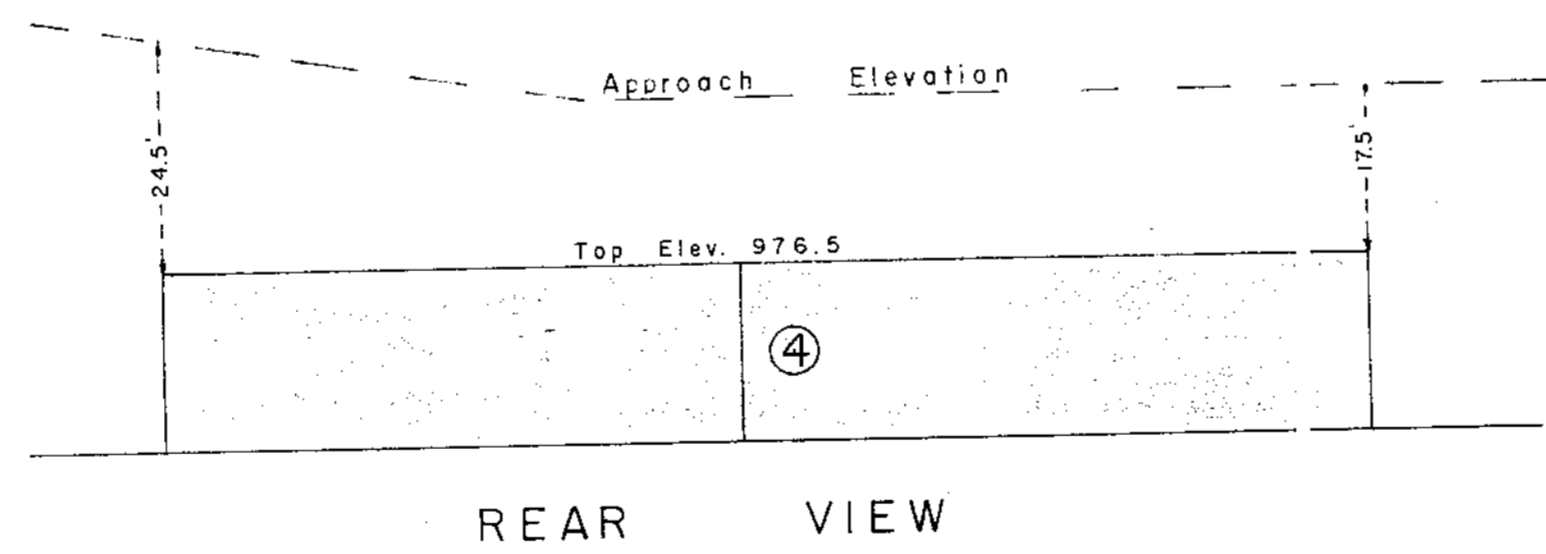
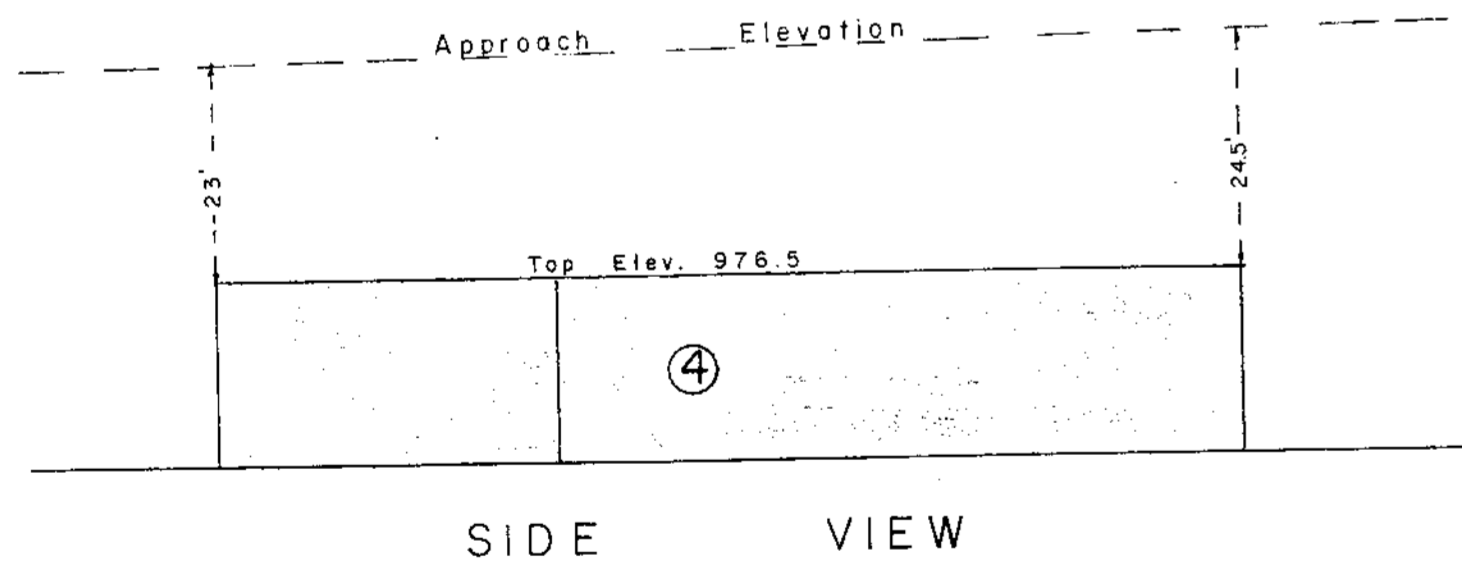
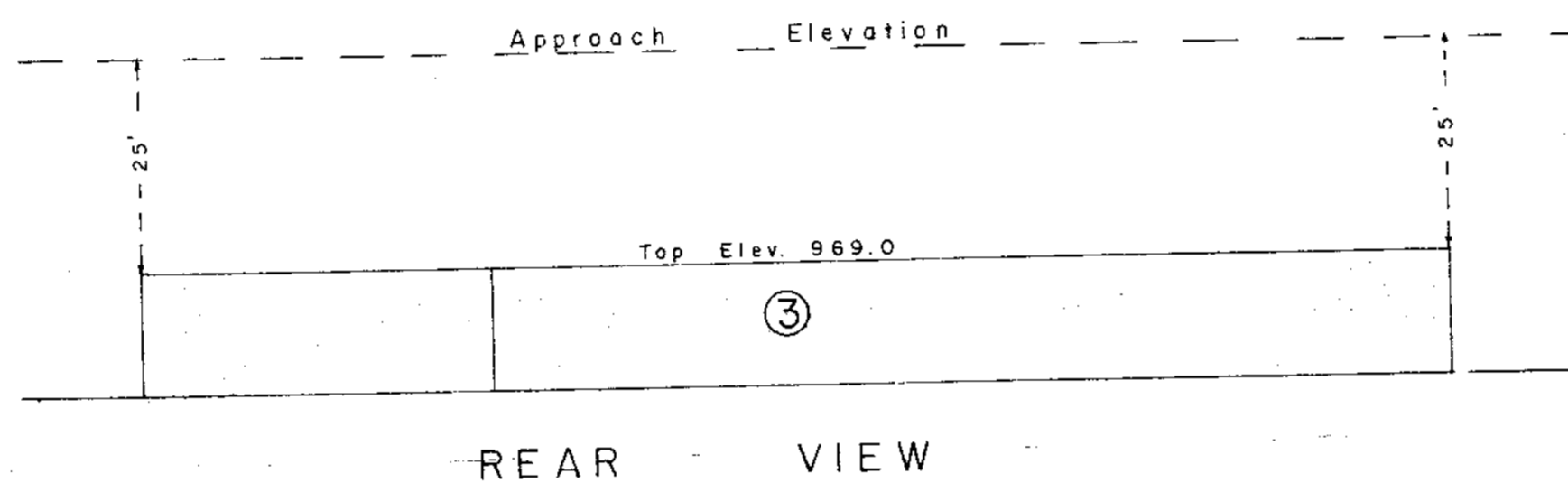
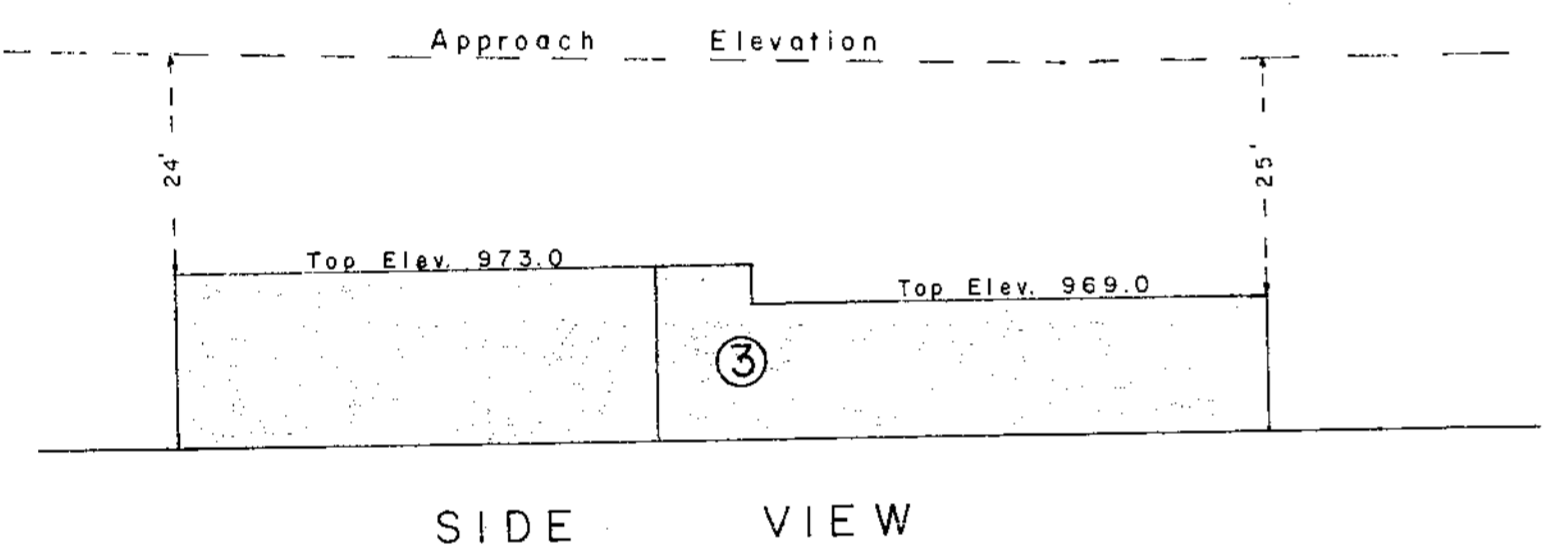
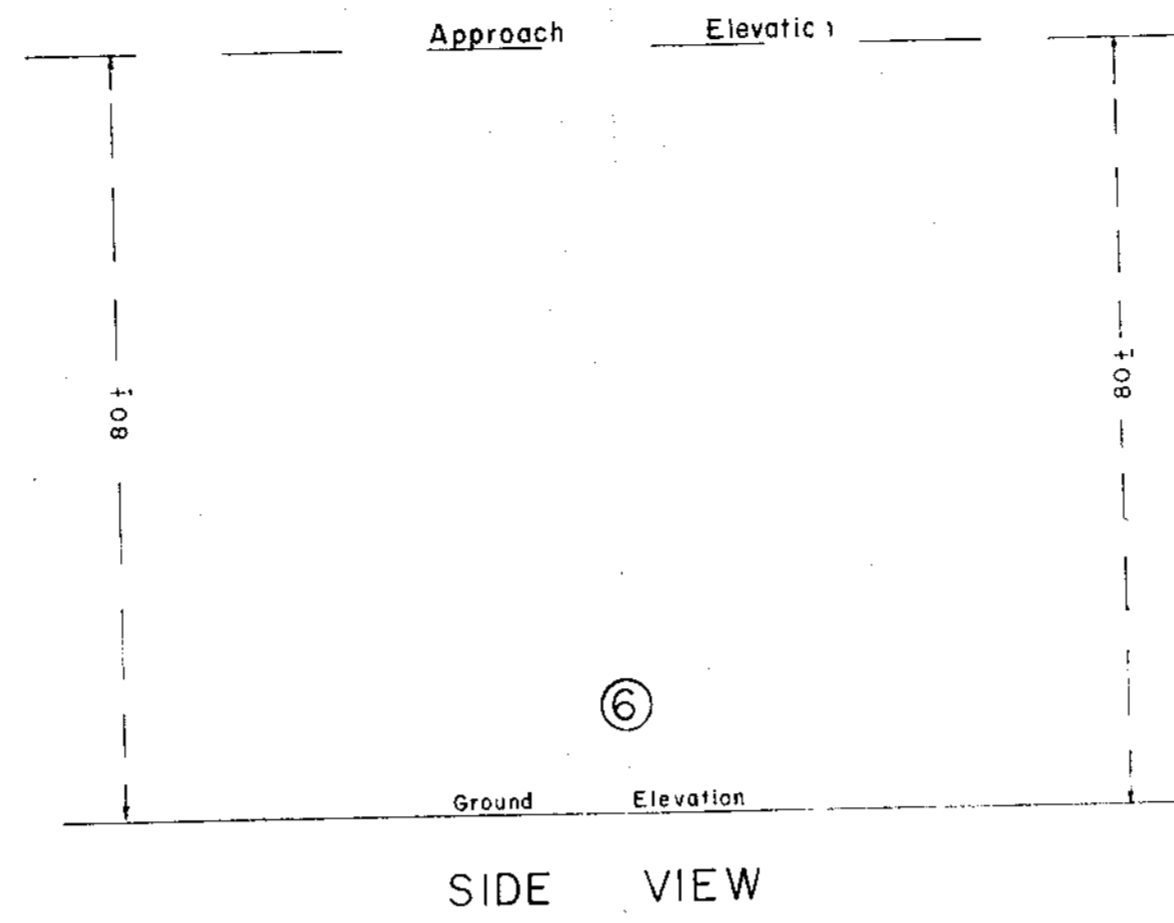
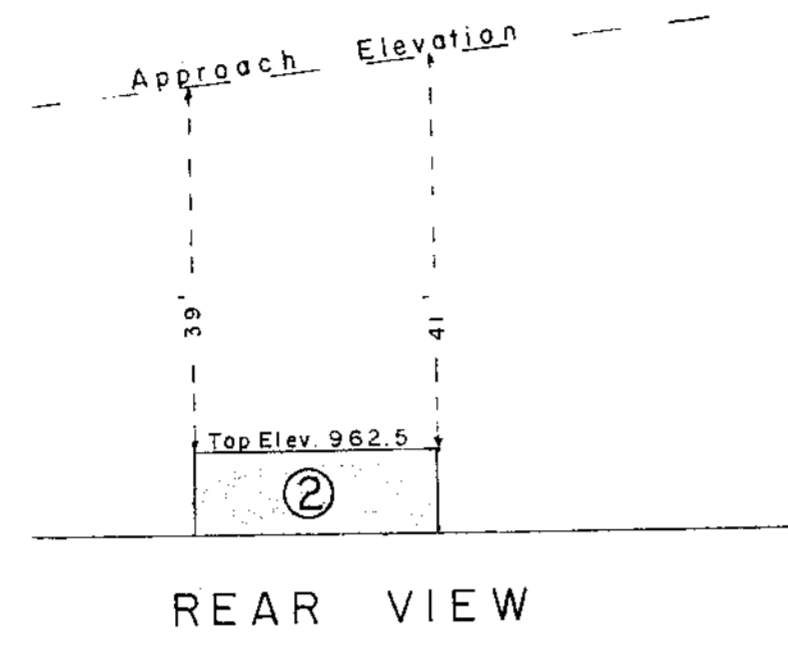
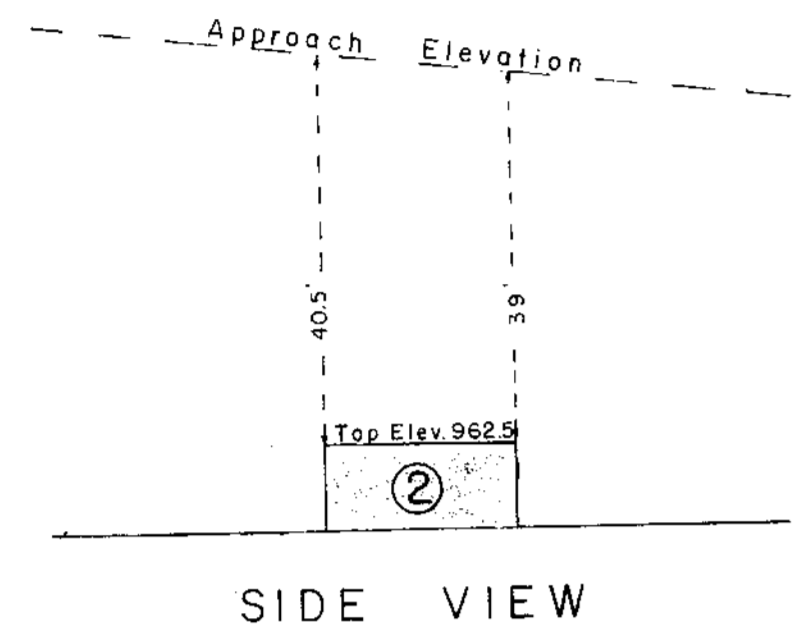
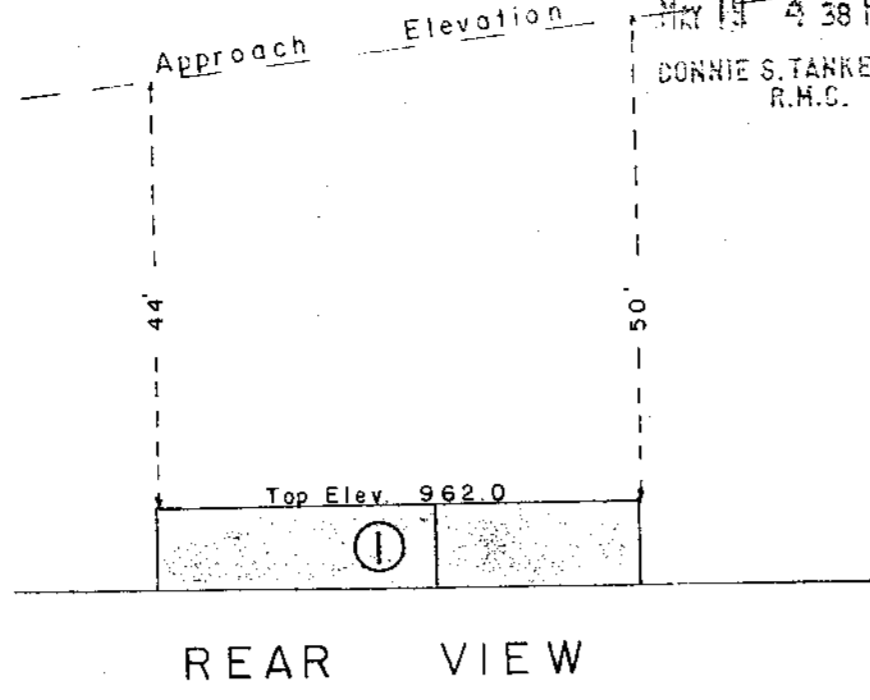
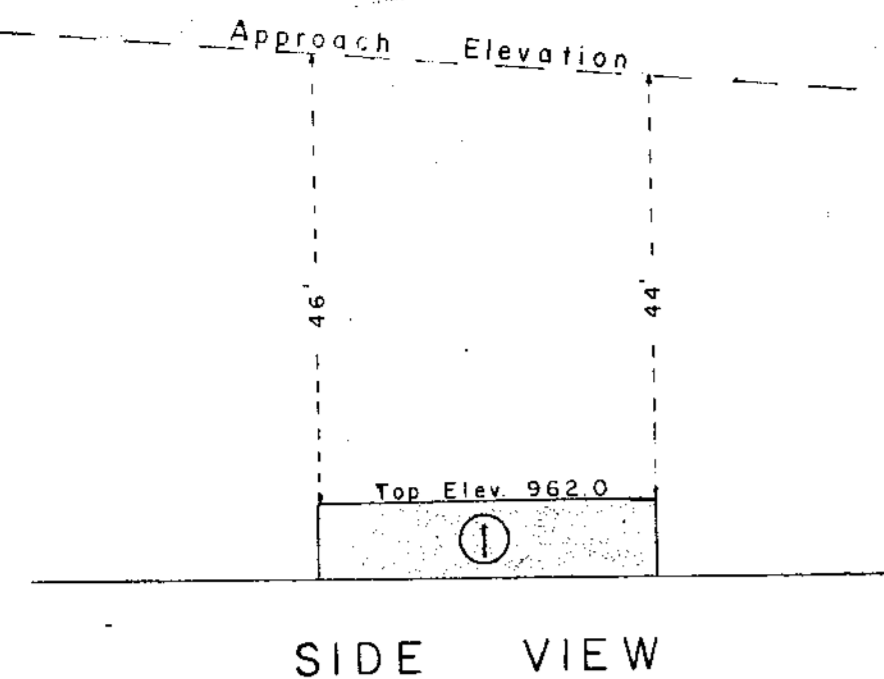
FILED
GREENVILLE, S.C.
MAY 19 4 38 PM '77
DONNIE S. TANKERSLEY
R.M.C.

6C-20

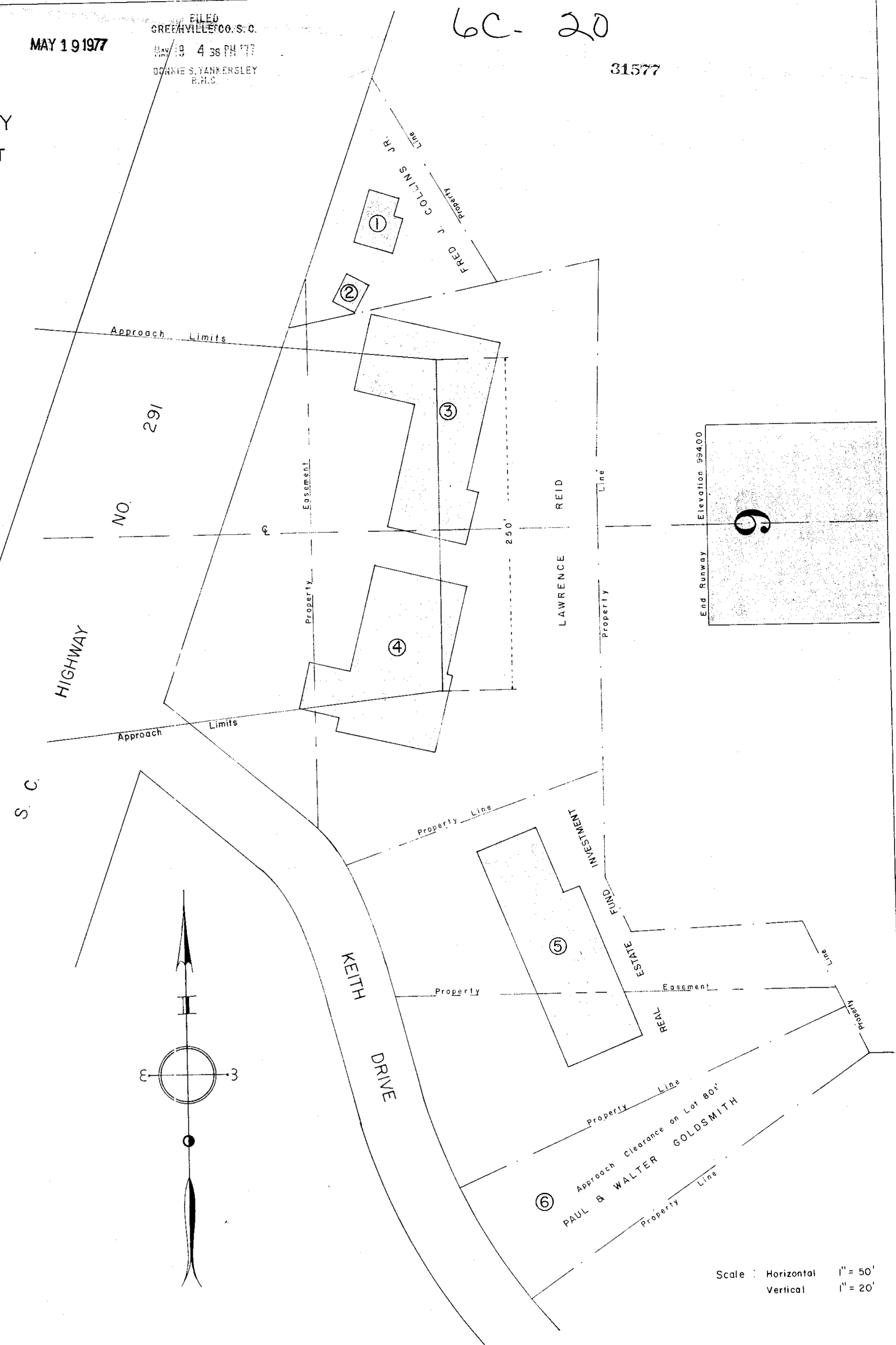
31577

APPROACH LIMITS OF WEST RUNWAY GREENVILLE MUNICIPAL DOWNTOWN AIRPORT GREENVILLE, S. C.

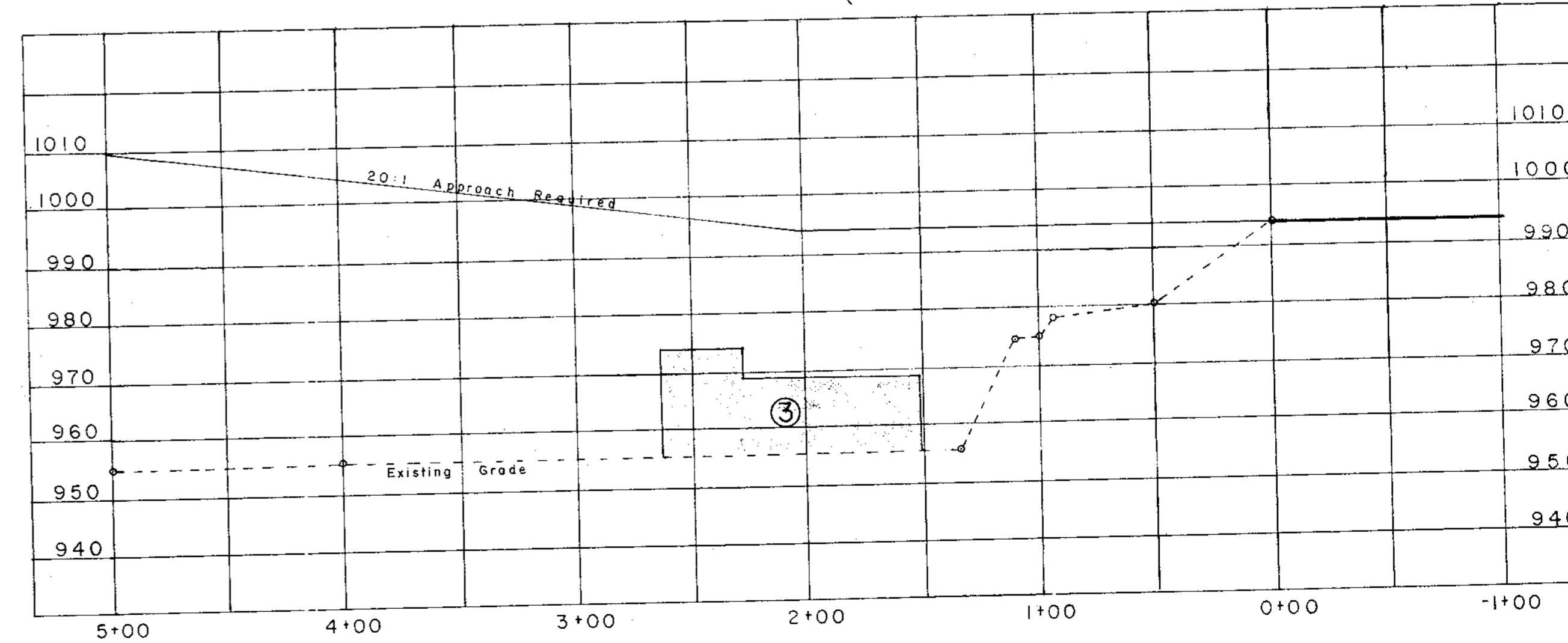
DALTON B. NEVES CI., ENGINEERS
GREENVILLE, S. C.
March, 1977



Scale 1" = 20'



Scale: Horizontal 1" = 50', Vertical 1" = 20'



NOTE: Approach elevations determined by using a 20:1 approach slope intercepted by a 7:1 side transition slope.